



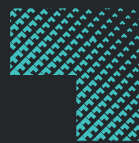
How to set up trials

for automated vehicles in Australia

For full details of how to manage your trial, refer to:

[Trial Guidelines for Automated Vehicles in Australia 2020](#)

Version 1, 2021



How to set up trials: a guide for industry

This guide provides an overview of how to set up a trial for automated vehicles or technology on Australian roads.

Getting started

You'll work with relevant state or territory road transport agencies to get approval for your trial.

Applications can be made for:

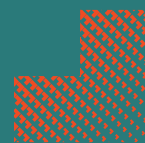
- trials of any type of automated vehicle technology
- trials of any size
- trials of a commercial or non-commercial nature
- trials across jurisdictional borders.

Vehicles can't legally operate in highly or fully automated driving mode on public roads in Australia without a permit or exemption.



There are guidelines for trials in Australia. They focus on flexibility and safety to support innovation.

For full details of how to manage your trial, read: [Guidelines for Trials of Automated Vehicles in Australia 2020.](#)



Steps for setting up a trial



These are the steps you'll follow to set up your automated vehicle (AV) trial in Australia. Local laws may vary, but all follow the [AV trial guidelines](#).

Step 1

Do some initial trial planning. This may include developing clear objectives and outcomes for the trial.

Consider:

- the environment and road conditions where the trial will take place
- the type of vehicle and technology to be used
- the type of trial you'd like to conduct.

Step 2

Engage with the relevant state and territory road transport agency (or agencies) to seek in-principle support for a trial on public roads.

Step 3

If you need to import a vehicle, apply to the Commonwealth Department of Infrastructure, Transport, Regional Development and Communications for approval.

The minister (or delegate) may grant concessional approval for import of AV(s) under the [Road Vehicle Standards Rules 2019](#).

Approval may be subject to conditions.

Step 4

With approval, AV(s) may now be imported. This is subject to satisfying import approval conditions, customs duties, quarantine and shipping requirements and relevant taxes.

Step 5

Finalise your trial application with the relevant state or territory road transport agency.



State and territory requirements and [the national trial guidelines](#) should inform your application. (If you're applying for a trial in Victoria, refer to the [Victorian trial guidelines](#) too.)

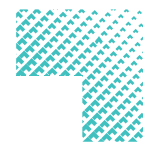
Road transport agencies will assess trial applications and work with you to make any necessary changes.

Step 6 (if required)

Apply to state or territory road transport agencies to register AV(s) for your trial.

Diagrams that outline this process are included [at the end of this guide](#).





Engaging with Australian governments

You'll work closely with relevant government organisations to develop your application, and get your trial and vehicles approved.

State and territory governments

Contact the road transport agency in the state or territory where the trial will happen.

You'll need permission to use trial vehicles on public roads. The application process differs for each state and territory.

All states and territories have helped facilitate automated vehicle trials with overseas organisations in recent years.

Learn more about previous trials [on the Austroads website](#).

Local contact information

Follow these links to contact the relevant local agency:

- [Australian Capital Territory](#)
- [New South Wales](#)
- [Northern Territory](#)
- [Queensland](#)
- [South Australia](#)
- [Tasmania](#)
- [Victoria](#)
- [Western Australia](#).

Importing a vehicle

The Australian Government's [Department of Infrastructure, Transport, Regional Development and Communications](#) (DITRDC) ensures all imported vehicles meet current [Australian Design Rules](#) (ADRs).

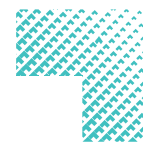
Where a vehicle doesn't meet applicable ADRs, you must apply with DITRDC to get concessional approval to import it. Examples include:

- some types of automated shuttles
- used vehicles or vehicles that have been modified since they were manufactured
- vehicles that aren't imported under an existing approval.

A letter of support from the relevant road transport agency is generally required for [this process](#).

If approved, automated vehicles may be imported, subject to meeting:

- import approval conditions
- customs duties
- quarantine and shipping requirements
- relevant taxes.



Additional resources for your application

Meeting the trial guidelines

Your application must provide information responding to the [Guidelines for Trials of Automated Vehicles in Australia 2020](#), published jointly by the NTC and Austroads.

These guidelines provide nationally consistent criteria in the following areas:

- management of trials
- insurance
- safety management plans
- data collection and information sharing.

These guidelines provide a performance-based framework that supports innovation and gives certainty to governments and industry alike.

They set out criteria that must be addressed in any application for an automated vehicle trial.

Trials will differ in technology, scale and risk. So some criteria may not be relevant to some trials. Trialling organisations must:

- set out how they have addressed all relevant criteria
- if necessary, explain which criteria are not relevant and why.

More information

Visit the following websites for more information and resources:

Trials undertaken in Australia

Austroads maintains a [comprehensive list of all automated vehicle trials](#) undertaken across Australia.

The import process

The Department of Infrastructure, Transport, Regional Development and Communications website explains [more about imports](#).

Austrade

The [Australian Trade and Investment Commission](#) offer advice to all businesses looking to establish themselves in Australia, including AV trial organisations.

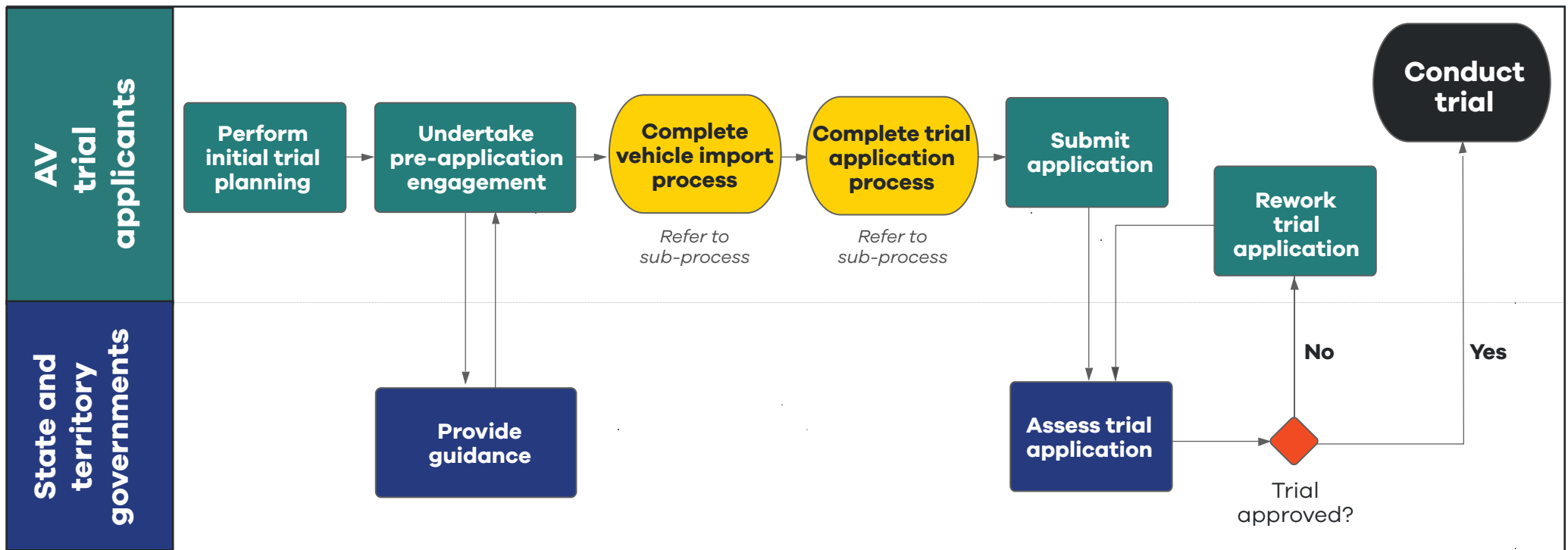
If you have questions about the trial guidelines, contact the NTC via enquiries@ntc.gov.au.



High-level process details

Setting up a trial

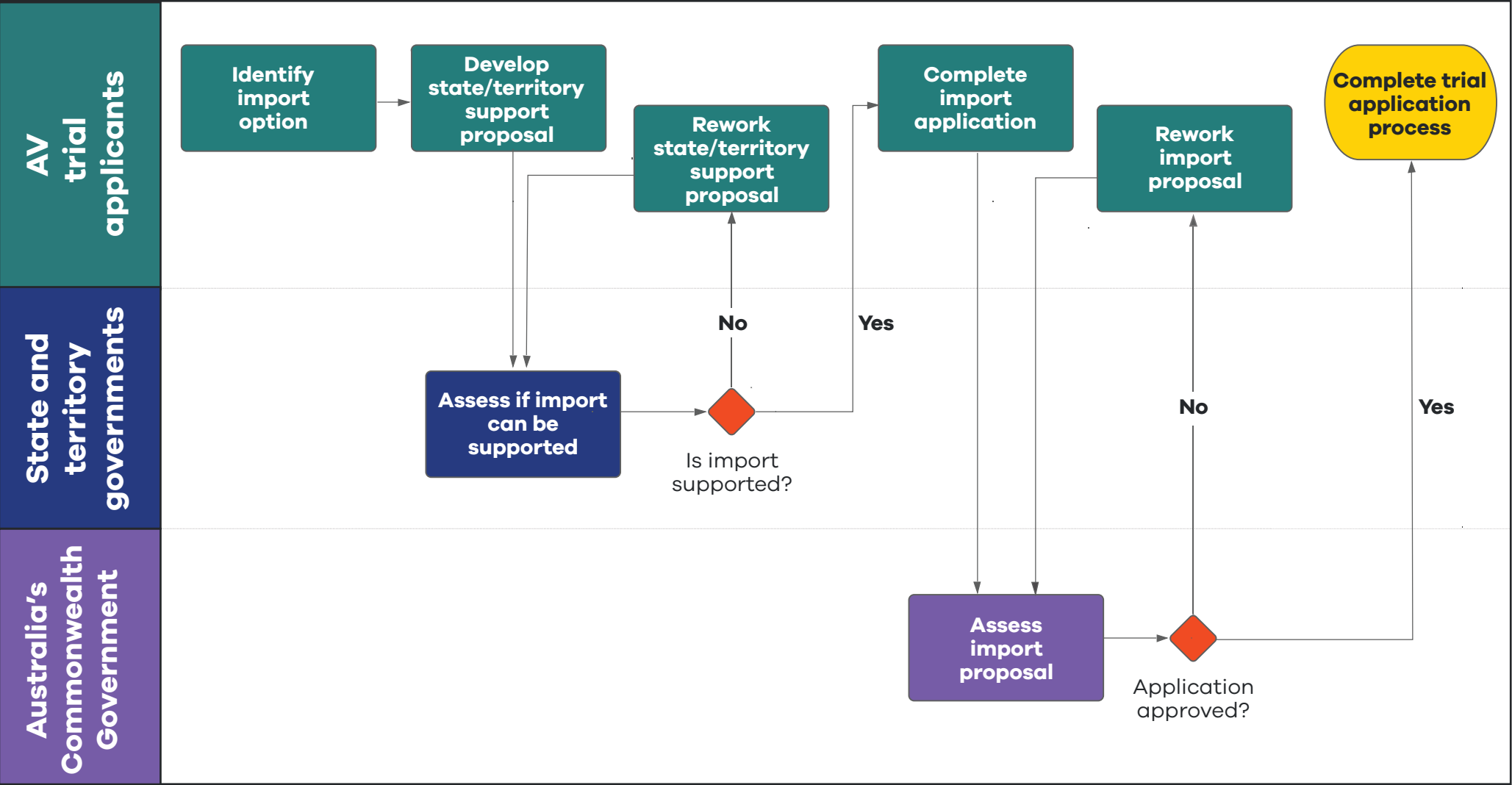
This is the high-level process for setting up your trial. Processes for importing a vehicle and completing your application are detailed on following pages.





Process for applying to import trial vehicles

While setting up your trial, you may need to import vehicles. Follow these steps to apply for approval.





Process to complete your trial application

Once you have permission to import, continue to develop your application for the trial.

Keep in contact with the state or territory road transport agency as you complete the below steps. You may also work with additional stakeholders, for example your technology or research partners.

